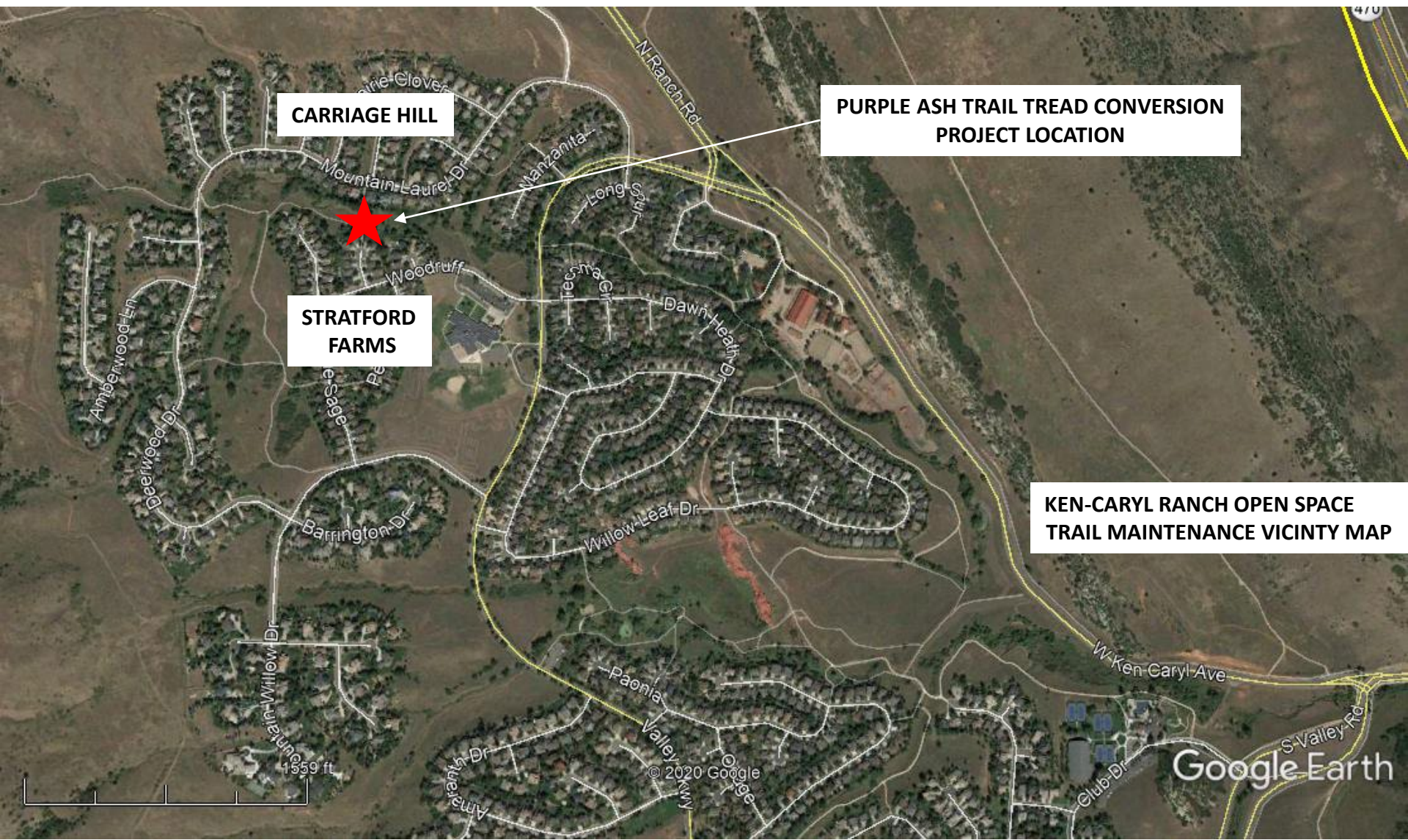


## PURPLE ASH TRAIL IMPROVEMENTS

The Ken-Caryl Ranch Open Space Committee will review planned improvements to the Purple Ash Trail at their monthly meeting on May 27 (see attached map). The current trail tread is a combination of crusher fine and concrete surfaces. The plan is to replace two, 50' sections of crusher fine tread on either side of the stream crossing with colored concrete. These areas are prone to wash out during storms when the stream rises and floods the trail. The hardened trail surface will hold up much better during these storm events.

Funds for the project will come from the KCRMA 2020 Annual Plan under the One-Time Projects budget for Soft Surface to Hard Surface Trail Conversions. There are several locations in open space where these conversions have occurred and staff believes it is a good option for addressing reoccurring maintenance problems with sections of soft surface trails that were either built on too steep a slope or experience concentrated storm flows. If you have questions, contact Open Space Manager, Sean Warren at 303-979-1876, x463 or [seanw@kcranch.org](mailto:seanw@kcranch.org).



**CARRIAGE HILL**

**PURPLE ASH TRAIL TREAD CONVERSION  
PROJECT LOCATION**

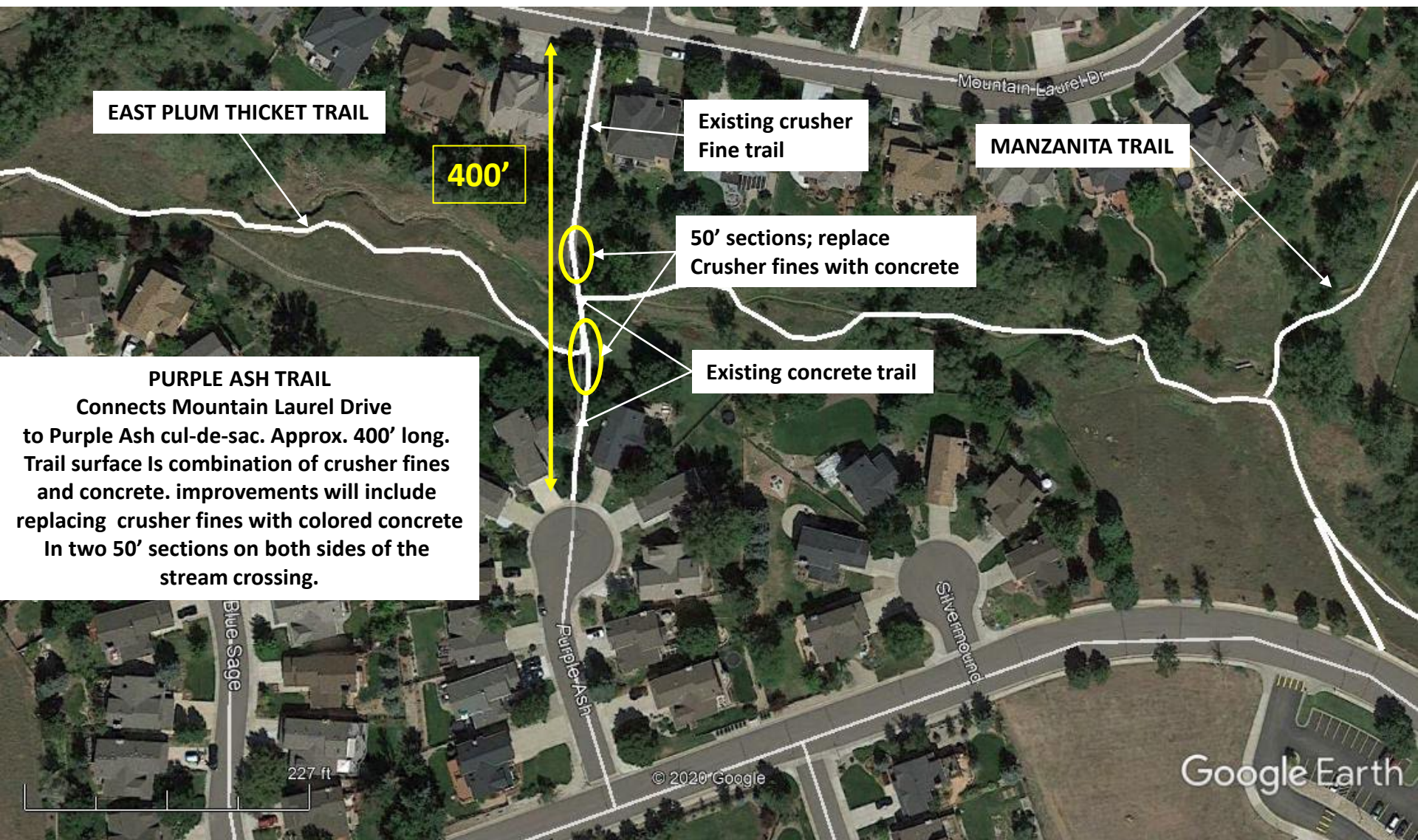
**STRATFORD  
FARMS**

**KEN-CARYL RANCH OPEN SPACE  
TRAIL MAINTENANCE VICINTY MAP**

1359 ft

© 2020 Google

Google Earth



**EAST PLUM THICKET TRAIL**

**400'**

**Existing crusher  
Fine trail**

**MANZANITA TRAIL**

**50' sections; replace  
Crusher fines with concrete**

**Existing concrete trail**

**PURPLE ASH TRAIL**  
Connects Mountain Laurel Drive  
to Purple Ash cul-de-sac. Approx. 400' long.  
Trail surface is combination of crusher fines  
and concrete. Improvements will include  
replacing crusher fines with colored concrete  
in two 50' sections on both sides of the  
stream crossing.

Blue Sage

Purple Ash

Silverstone

227 ft

© 2020 Google

Google Earth